

Term paper

Visual Analysis Paper: Implied Lines in Art

Student Full Name

Institutional Affiliation

Course Full Title

Instructor Full Name

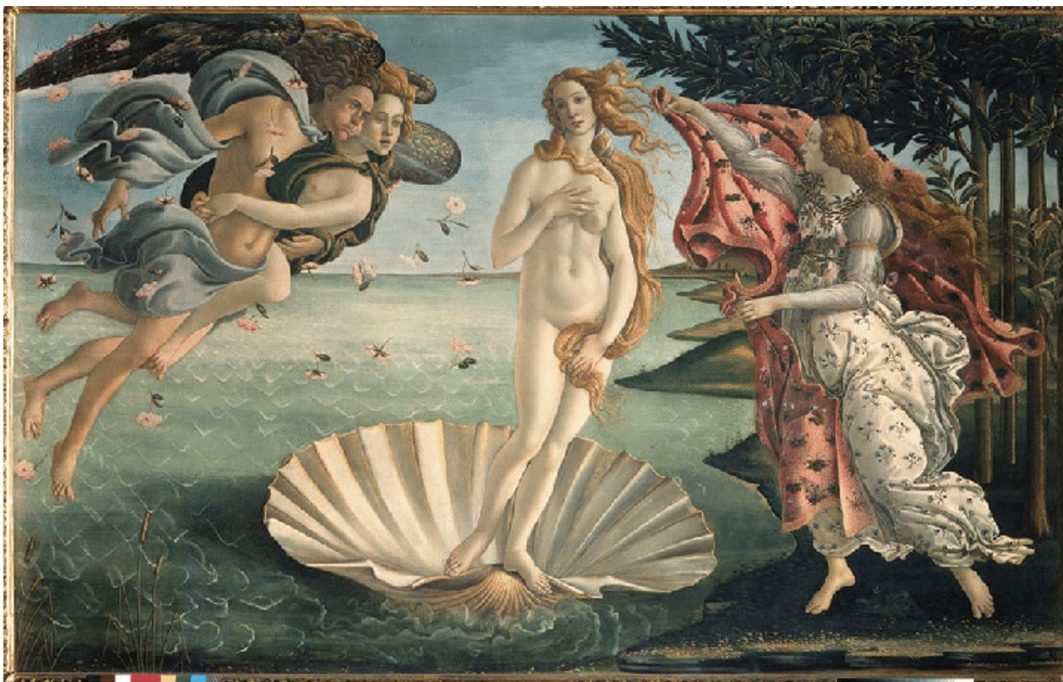
Due date

Visual Analysis Paper: Implied Lines in Art

Introduction

The contrast of historical masterpieces and contemporary creations serves as a thrilling voyage through time and expression in the broad field of art, where language transcends spoken words. This investigation digs into the visual narratives woven by two prominent artists—Sandro Botticelli and George Condo—whose works, though centuries apart, share a canvas in the exploration of suggested lines, design principles, and subject richness. "The Birth of Venus," Botticelli's Renaissance masterpiece, unfolds the divine beauty of mythology through eloquent lines and harmonious shapes. At the same time, "People Are Strange," Condo's contemporary exploration, navigates the complexities of our modern society with fragmented portraits and intricate abstractions. This research will highlight the rich language of visual art, demonstrating its ability to transcend disparate eras, issues, and artistic views as we cross the eloquence of Botticelli's classical delicacy and Condo's avant-garde complexity.

1st Visual: Sandro Botticelli - "The Birth of Venus"



Elements of Art and Materials Used

Botticelli's "The Birth of Venus" is a masterclass in line strategy. Implied lines, most notably in the modestly tilted bodies of the people on the left, form an enthralling diagonal trajectory, linking the observer with the characters and directing the eye to the central figure. The positioning of people and objects creates harmonic shapes, which contribute to the composition's overall balance and beauty (Online Lecture, n.d). Soft and muted tones dominate the color pallet, emphasizing the painting's ethereal character and emphasizing the divine beauty of the subject matter. Despite the two-dimensional surface, Botticelli

incorporates texture, particularly in the flowing hair, providing a tactile illusion that adds to the artwork's multisensory experience.

Design Principles

Botticelli's deft use of design principles heightens the impact and artistic coherence of "The Birth of Venus." Unity is created by using inferred lines to connect the figures and guide the spectator through a unified visual narrative. Balance is done flawlessly, ensuring that no single piece dominates the composition and that each component adds to the overall visual stability (Online Lecture, n.d). Proportion is important, with careful consideration paid to the proportional relationships between figures, elements, and negative spaces. This dedication to proportion raises the artwork to a degree of eternal beauty that transcends decades, demonstrating Botticelli's mastery of design principles.

Subject Matter and Content

"The Birth of Venus" captures the subject of Venus's debut with sublime beauty and elegance. Botticelli weaves a sophisticated visual story that unfolds fluidly by using inferred lines as a narrative guide. The subject matter, which is rooted in Greek mythology, becomes a conduit for telling the story of Venus's genesis and generating a sense of celestial beauty and grace that transcends earthly boundaries (Online Lecture, n.d). The artwork is transformed into a timeless picture of mythological storytelling, inviting spectators to connect with the ethereal narrative and experience the ageless fascination of classical themes.

2nd Visual: George Condo - "People Are Strange"



Elements of Art and Materials Used

In George Condo's "People Are Strange," the artist expertly combines several art themes to produce a visually attractive and complicated composition. Condo fills his portraits and abstractions with movement and intricacy by employing dynamic and fractured lines. Notably, the undulating patterns in the triptych "Transformation" feature a diversity of lines, adding to the piece's overall frenetic intensity (Virtual Exhibitions, n.d). Shapes, both familiar and deformed, play an important role in the fragmented pictures, providing a fascinating quality. The predominant use of color, as seen in works such as "Transitional Portrait in Turquoise and Gold," not only expresses mood but also emphasizes the iconographic aspects. The layering of paint creates texture, capturing the built-up, layered stages of the artwork's production (Virtual Exhibitions, n.d). Furthermore, the triptych's mass of forms provides a sense of density and intensity, accentuating the emotional weight of the subjects.

Design Principles

Condo expertly employs design concepts to produce a visually coherent and engaging experience. Despite the apparent disparity of the parts, he achieves coherence through a central concept of metamorphosis that connects the artworks. Each portrait's prominent hue contributes to this unity, producing a unified tone that penetrates the entire exhibition (Virtual Exhibitions, n.d). The great range of forms, patterns, and colors of Condo's work engages the observer and adds intricacy to the tale. Condo's technique is distinguished by a balance of disorder and intactness, which reflects the shattered nature of our current period. This balance is especially visible in the triptych, where frenetic energy coexists with moments of engagement, producing a visually engaging balance.

Subject Matter and Content

"People Are Strange" explores a universe of opposing forces and states, capturing a sense of transition and temporality. Condo's fragmentary portraits and abstractions allude to the world's ever-changing problems while embodying a logical chaos that relates to the splintered condition of our current moment. Inspired by the ability of literature to chronicle the passage of time, the artist presents a trio of large-scale portraits of female muses, each dominated by a color communicating mood with iconographic intensity (Virtual Exhibitions, n.d). The exhibition's major theme of isolation and its repercussions on community and society is prominently featured in the large-scale triptych "Transformation." Condo analyzes the rising isolation that draws people apart, producing a heartbreaking statement on the fraying and fracture of community and society.

Comparison

When contrasting Sandro Botticelli's "The Birth of Venus" with George Condo's "People Are Strange," unique artistic techniques and thematic nuances emerge, providing an enthralling examination of classical and contemporary emotions.

Visual Elements of Art: Botticelli's use of suggested lines in "The Birth of Venus" orchestrates a beautiful movement, connecting figures and elegantly leading the viewer. Condo's disjointed lyrics in "People Are Strange", on the other hand, produce a dynamic, frenzied energy that engages the listener with a sense of intricacy and disorder. Condo welcomes varied shapes, adding intriguing elements to his shattered compositions, whereas Botticelli depends on harmonious shapes to achieve balance and elegance.

Design Principles: Botticelli's design concepts emphasize harmony, balance, and proportion in order to create a harmonious and everlasting composition. Condo, on the other hand, excels in balancing disorder with intactness, reflecting modern society's shattered nature. Botticelli emphasizes classical beauty, whereas Condo delves into the difficulties of modern life.

Subject Matter and Content: "The Birth of Venus" encompasses classical mythology, depicting the divine beauty of Venus's birth with elegance and grace. In contrast, "People Are Strange" delves into modern themes of isolation, transition, and societal splits to explore a universe of competing forces and states. Condo's art reflects on the disillusioned character of individuals, questioning if it is the people or the politicians who are genuinely odd.

Function: Within their various contexts, both artworks perform diverse functions. Botticelli's Renaissance-inspired work provides a narrative role by immortalizing the classical myth of Venus's birth. "People Are Strange" by Condo is a commentary on modern life, encouraging viewers to consider the impact of solitude and societal changes. Each piece's function corresponds to the artistic aims of its makers.

Content: While Botticelli is interested in the celestial and mythological, Condo is interested in the complexity and ambiguities of the human experience. "People Are Strange" reflects the zeitgeist of a fractured and changing world, while "The Birth of Venus" resonates with ageless beauty and exquisite elegance. Each artist's perspective and engagement with their cultural and temporal surroundings is reflected in the content. Finally, the comparison between Botticelli's classical masterpiece and Condo's contemporary inquiry demonstrates the various ways in which artists use visual elements, design principles, subject matter, and content to deliver their messages. Both painters excel in their respective fields, with Botticelli exemplifying classical beauty and Condo providing a thought-provoking reflection on the complexity of modern life. The analysis of these works of art illustrates the continuous importance of artistic expression over ages and cultural shifts.

Conclusion

Finally, the comparison of "The Birth of Venus" by Sandro Botticelli and "People Are Strange" by George Condo presents a rich tapestry of creative variance and thematic development. Botticelli's classical expertise, as evidenced by the beautiful lines, harmonious shapes, and timeless beauty, contrasts sharply with Condo's contemporary complexity, as evidenced by dynamic lines, fractured compositions, and a profound reflection on societal changes. The skilled use of graphic components, design concepts, subject matter, and content by each artist reflects their perspectives and engages with the cultural environments of their respective times. The investigation highlights the dynamic character of art, which is capable of transcending historical and stylistic limits. While their methodologies differ, both works demonstrate the lasting power of visual storytelling and its ability to convey the essence of human experience over the ages. Viewers are reminded of the global language buried in the painting as they travel the realms of classical mythology and contemporary contemplation, linking disparate periods and artistic perspectives through the common thread of visual expression.

References

Virtual Exhibitions. (n.d) <https://v21artspace.com/virtual-exhibitions#3d-virtual-exhibitions>

Online Lecture: The Visual Elements. (n.d). Online Lecture: The VisualElements